

2007 ETBF EMC-Short



Oil Per Board: 45 mL Oil Pattern Distance: 35 Feet Volume Oil Total: 22.59 mL Total Boards Crossed: 502 Boards

Forward Oil Total: 11.16 mL Reverse Oil Total: 11.43 mL

Forward Boards Crossed: 248 Boards Reverse Boards Crossed: 254 Boards

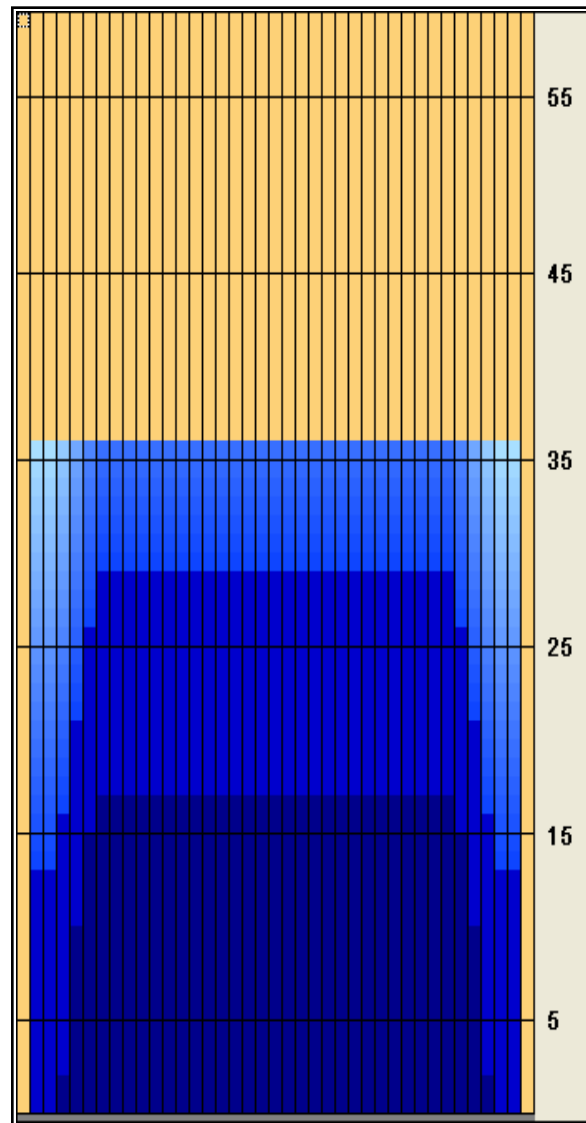
	Start	Stop	Loads	Speed	Crossed	Start	End	Feet	T.Oil
1	2L	2R	1	14	37	0.0	0.0	0.0	1,665
2	4L	4R	1	14	33	0.0	1.9	1.9	1485
3	5L	5R	3	18	93	1.9	9.5	7.6	4185
4	6L	6R	2	18	58	9.5	14.6	5.1	2610
5	7L	7R	1	18	27	14.6	17.1	2.5	1215
6	2L	2R	0	18	0	17.1	27.0	9.9	0
7	2L	2R	0	22	0	27.0	30.0	3.0	0
8	2L	2R	0	30	0	30.0	35.0	5.0	0

Navigation: Forward Reverse More Info

	Start	Stop	Loads	Speed	Crossed	Start	End	Feet	T.Oil
1	2L	2R	0	30	0	35.0	28.0	-7.0	0
2	7L	7R	1	22	27	28.0	24.9	-3.1	1215
3	6L	6R	2	18	58	24.9	19.8	-5.1	2610
4	5L	5R	2	18	62	19.8	14.7	-5.1	2790
5	4L	4R	1	18	33	14.7	12.2	-2.5	1485
6	2L	2R	2	18	74	12.2	7.1	-5.1	3330
7	2L	2R	0	10	0	7.1	0.0	-7.1	0

Navigation: Forward Reverse More Info

Forward Oil
Reverse Oil
Combined Oil
Buff Area

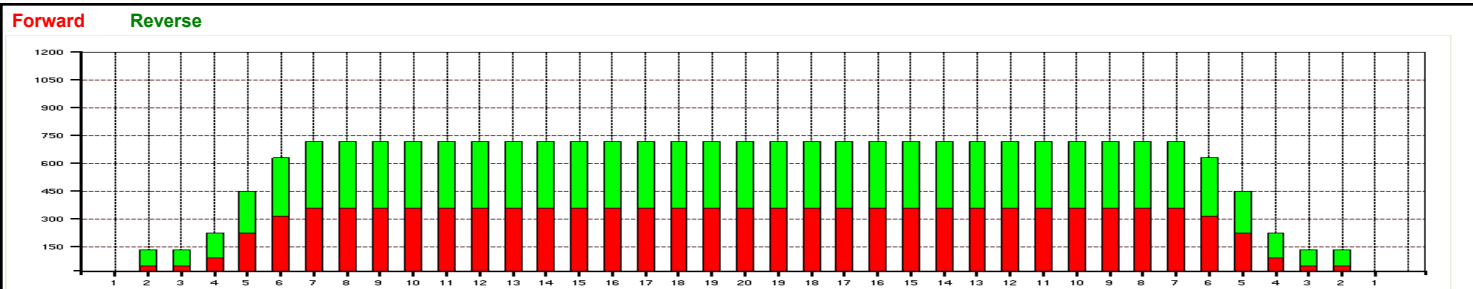


Arrow Zone Ratios

Item	2-6L:16L-20	6-10L:16-20	11-16L:16L-20	16L-20:20-16R	16L-20:20-16R	20-16R:15-11R	20-16R:10-6R	20-16R:5-2R
ml Arrow	236.25	702	720	720	720	720	702	236.25
Zone Ratio	3.05	1.03	1	1	1	1	1.03	3.05

Track Zone Ratios

Item	3L-7L:18L-18R	8L-12L:18L-18R	13L-17L:18L-18R	18L-18R:17R-13R	18L-18R:12R-8R	18L-18R:7R-3R
Description	Outside Track:Middle	Middle Track:Middle	Inside Track:Middle	Middle: Inside Track	Middle:Middle Track	Middle:Outside Track
Track Zone Ratio	1.67	1	1	1	1	1.67

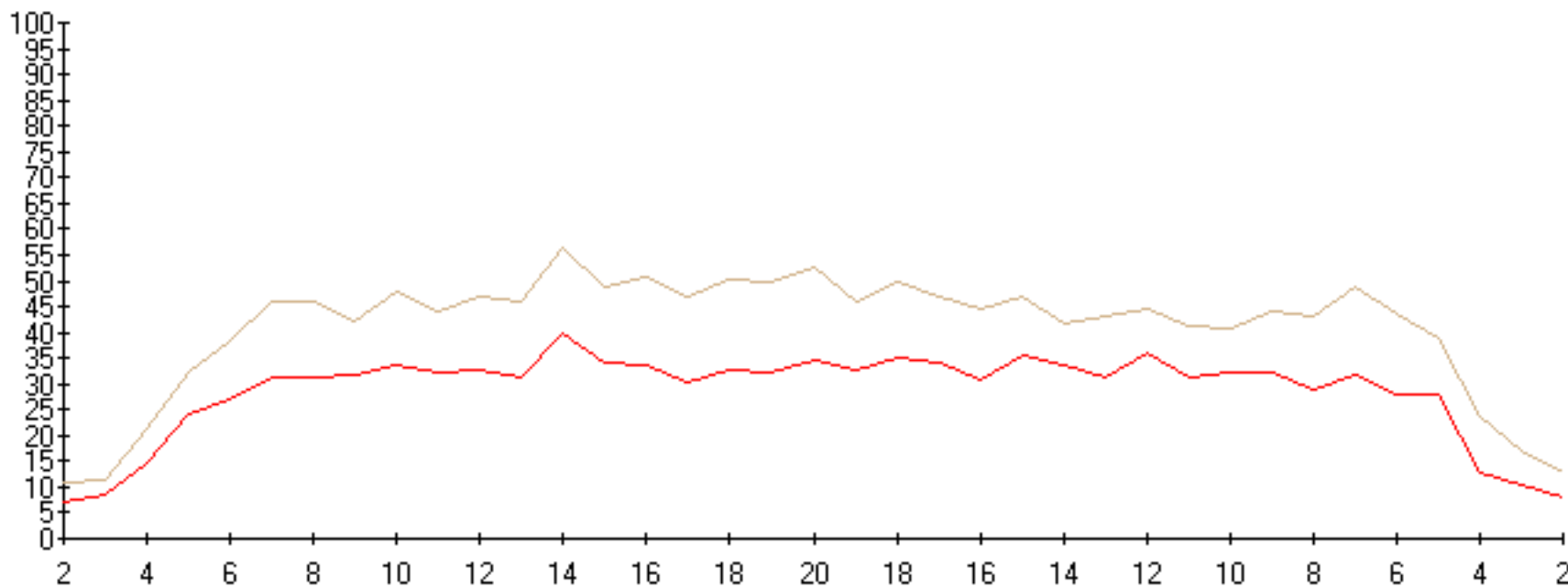


Lane Monitor 6/30/2007

Memo

Center	Lane	Lines	Date	Distance	Memo	Tape #
2007 EMC-Vienna	29	0	06/29/2007	33	Machine Match-#2 Short■■■■■	1
2007 EMC-Vienna	29	0	06/29/2007	22	Machine Match-#2 Short■■■■■	2

Depth



2007 ETBF EMC-Long



Oil Per Board: 45 mL Oil Pattern Distance: 45 Feet Volume Oil Total: 22.68 mL Total Boards Crossed: 504 Boards

Forward Oil Total: 8.955 mL Reverse Oil Total: 13.725 mL
 Forward Boards Crossed: 199 Boards Reverse Boards Crossed: 305 Boards

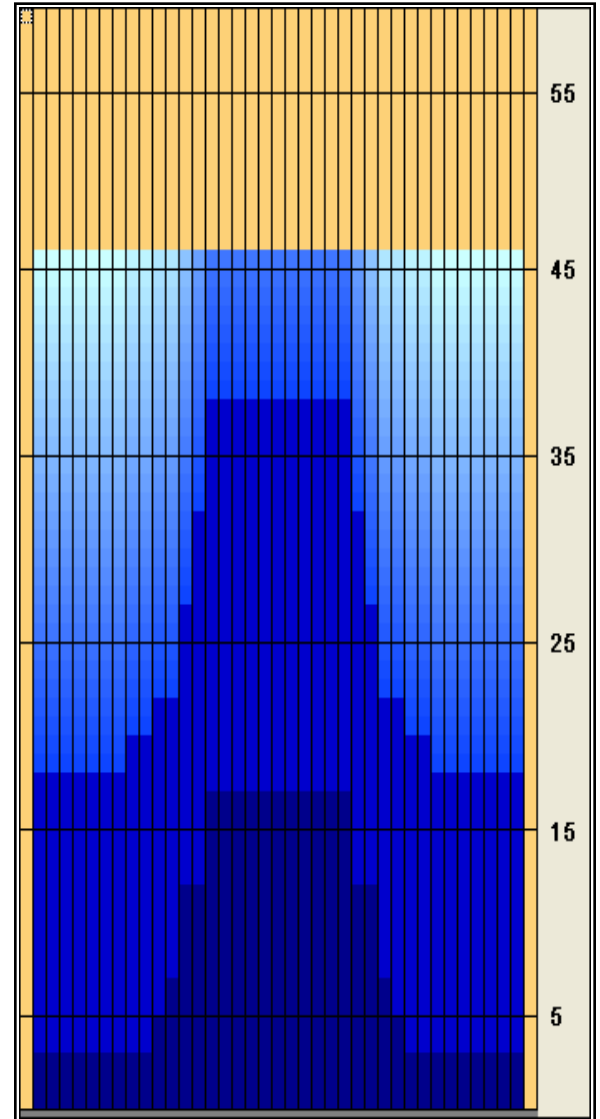
	Start	Stop	Loads	Speed	Crossed	Start	End	Feet	T.Oil
1	2L	2R	3	10	111	0.0	2.8	2.8	4,995
2	11L	11R	1	14	19	2.8	4.7	1.9	855
3	12L	12R	1	14	17	4.7	6.6	1.9	765
4	13L	13R	2	18	30	6.6	11.7	5.1	1350
5	15L	15R	2	18	22	11.7	16.8	5.1	990
6	2L	2R	0	22	0	16.8	27.0	10.2	0
7	2L	2R	0	26	0	27.0	36.0	9.0	0
8	2L	2R	0	30	0	36.0	45.0	9.0	0

Navigation: Forward Reverse More Info

	Start	Stop	Loads	Speed	Crossed	Start	End	Feet	T.Oil
1	2L	2R	0	30	0	45.0	37.0	-8.0	0
2	15L	15R	2	22	22	37.0	30.8	-6.2	990
3	14L	14R	2	18	26	30.8	25.7	-5.1	1170
4	13L	13R	2	18	30	25.7	20.6	-5.1	1350
5	11L	11R	1	14	19	20.6	18.7	-1.9	855
6	9L	9R	1	14	23	18.7	16.8	-1.9	1035
7	2L	2R	5	14	185	16.8	6.9	-9.9	8325
8	2L	2R	0	10	0	6.9	0.0	-6.9	0

Navigation: Forward Reverse More Info

Forward Oil
 Reverse Oil
 Combined Oil
 Buff Area

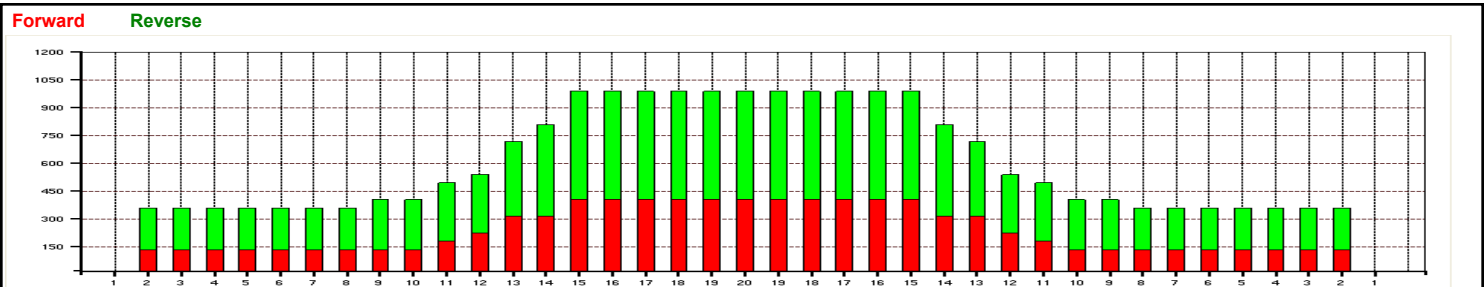


Arrow Zone Ratios

Item	2-6L:16L-20	6-10L:16-20	11-16L:16L-20	16L-20:20-16R	16L-20:20-16R	20-16R:15-11R	20-16R:10-6R	20-16R:5-2R
ml Arrow	360	378	711	990	990	711	378	360
Zone Ratio	2.75	2.62	1.39	1	1	1.39	2.62	2.75

Track Zone Ratios

Item	3L-7L:18L-18R	8L-12L:18L-18R	13L-17L:18L-18R	18L-18R:17R-13R	18L-18R:12R-8R	18L-18R:7R-3R
Description	Outside Track:Middle	Middle Track:Middle	Inside Track:Middle	Middle: Inside Track	Middle:Middle Track	Middle:Outside Track
Track Zone Ratio	2.75	2.24	1.1	1.1	2.24	2.75



Lane Monitor 6/30/2007

Memo

Center	Lane	Lines	Date	Distance	Memo	Tape #
2007 EMC-Vienna	30	0	06/29/2007	43	Machine Match-#2 Long	1
2007 EMC-Vienna	30	0	06/29/2007	22	Machine Match-#2 Long	2

Depth

